

SPECIFICATION:

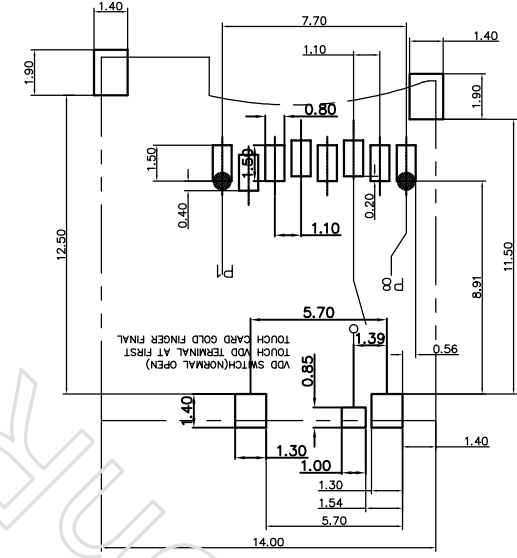
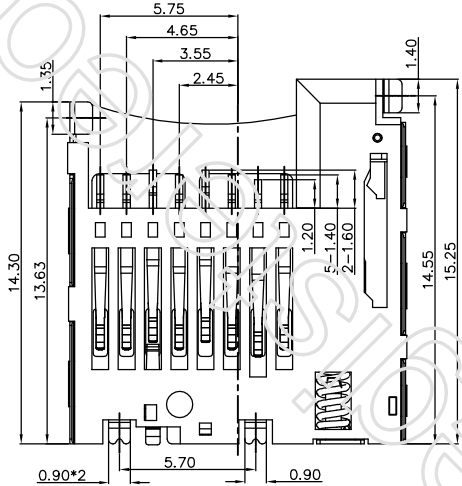
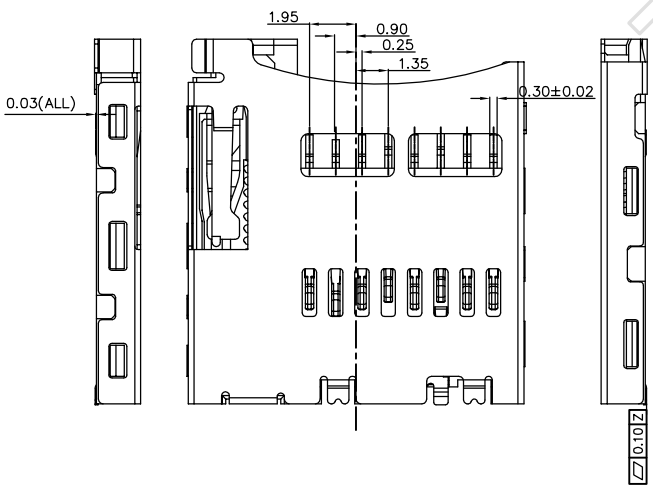
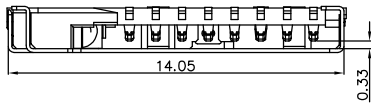
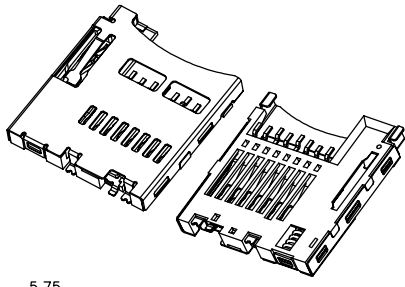
1. Electrical characteristics
 - 1.1 Contact current rating: 0.5A Max.
 - 1.2 Contact resistance: 100 milli-Ohm Max.
 - 1.3 Insulation resistance: 250V DC or 300V AC for no less than 1 minute
2. Mechanical characteristics
 - 2.1 Mating durability: 5000 cycles.
 - 2.2 Insertion force: 2.0Kgf Max.
 - 2.3 Extraction force: 0.5Kgf Min.
3. Environmental characteristics
 - 3.1 Operation temperature range: -25° C to +85° C

MATERIAL:

Insulator: LCP High Temperature Thermoplastic, UL 94V-0.
 Contact: Copper Alloy C 5191
 Shell: Copper Alloy SUS

PLATING:

Contact: Plated 50u" Ni Overall
 Plated Au Selective Contact Area
 Plated 80u" Sn Over Ni On Solder Area
 Shell: Plated 50u" Ni Overall, Pad Aer GOFLASH



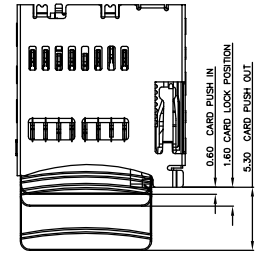
RECOMMEND PCB LAYOUT
 GENERAL TOLERANCE ±0.05



Pin No.	MICRO SD
PIN1	DAT2 1P
PIN2	CD/DAT3 2P
PIN3	CMD 3P
PIN4	VDD 4P
PIN5	CLK 5P
PIN6	VSS 6P
PIN7	DAT0 7P
PIN8	DAT1 8P
PIN9	CARD DETECT
PIN10	

PART. NO. : XNT-MR03-AP4**
 主体胶芯颜色: 01 黑色

08: 功能区镀金1U", 锡脚Gold Flash
 09: 功能区镀金3U", 锡脚Gold Flash
 10: 功能区镀金5U", 锡脚Gold Flash
 11: 功能区镀金10U", 锡脚Gold Flash
 12: 功能区镀金15U", 锡脚Gold Flash



GENERAL TOLERANCE	DWG.NO.	XNT-0023	PART.NO.	XNT-MA03-AP401-08	DRAWN	DRAWN	UNIT	UNIT	SCALE	SCALE
X.±0.50	REV.	A	TITLE	TITLE	CHECKED		深圳市鑫南天科技有限公司			
.X±0.38	SIZE		SHEET	SHEET	APPROVED	MIKE				
.XX±0.25	A4					20010.11.02				

