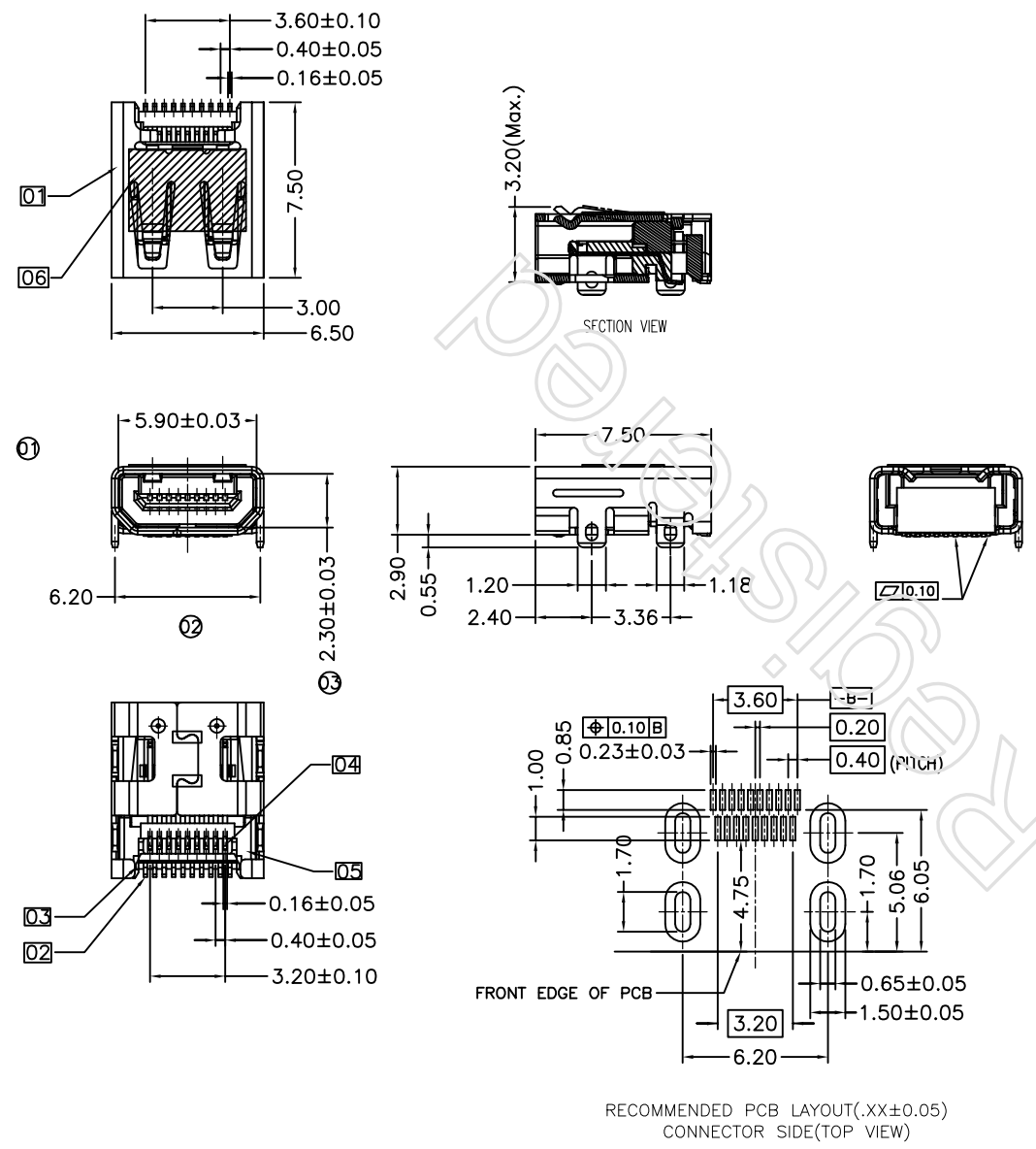


REV	DESCRIPTION	DATE



NOTE:  
 1.MATERIAL AND FINISH SEE THE TABLE.  
 2.MECHANICAL CHARACTERISTICS  
 INSERTION FORCE: 44.1N MAX  
 EXTROCTION FORCE: 5N MIN(AFTER 5000 CYCLES 3N MIN.), 25N MAX.  
 MATING CYCLE:5000 CYCLES  
 3.ELECTRICAL CHARACTERISTICS  
 RATING CURRENT: 0.3A  
 RATING VOLTAGE: 40V  
 CONTACT RESISTANCE: 10 MILLOHMS OHMS MAX (EXCLDING CONDUCTOR RESISTANCE)  
 INSULATION RESISTANCE:  
 a, UNMATED: 100M OHMS MIN AT 500 VDC  
 b, MATED: 10M OHMS MIN AT 150 VDC  
 DIELECTRIC WITHSTANDING VOLTAGE:  
 a, UNMATED: 250V AC(RMS)  
 b, MATED: 150V AC(RMS)  
 4.MARKED ⊕ DIMENSION SHOULD BE MEASURED BY QIP;

PART NO:  
 XNT-A151902-B-XX-X  
 T:TRAY  
 R:TAPE & REEL  
 Contact Area Plating  
 01: Au 1u"  
 03: Au 3u"  
 05: Au 5u"  
 10: Au 10u"  
 15: Au 15u"  
 30: Au 30u"

NO.	NAME	MATERIAL	FINISH/COLOR	NOTE
01	SHELL	STAINLESS STEEL	MATTE TIN UNDER PLATED	t=0.30
02	10Pin TERMINAL	COPPER ALLOY	GOLD PLATING ON CONTACT AREA SEE PART NO.1u"MIN. PLATED ON SOLDER TAILS	t=0.12
03	10Pin InsertMolding	LCP+30%G.F	UL94V-0 BLACK	
04	9Pin TERMINAL	COPPER ALLOY	GOLD PLATING ON CONTACT AREA SEE PART NO.1u"MIN. PLATED ON SOLDER TAILS	t=0.12
05	9Pin InsertMolding	LCP+30%G.F	UL94V-0 BLACK	
06	MYLAR			

RECOMMENDED PCB LAYOUT(.XX±0.05)  
 CONNECTOR SIDE(TOP VIEW)

深圳市鑫南天科技有限公司

TITLE/品名: HDMI-D-19P-F Insertmold Shell Dip  
 PART NO/料号: XNT-A151902-B-15-R  
 DIM X. TOL ±0.40

APPROVE/核准	CHECKED/审查	DRAWING/绘图	DRAWING NO/图号	UNIT/单位	REV/版本	SHEET	PROJ.	DIM	TOL
MICK.CHEN	KING	KING	A-11-0806	mm	A0	1/1	⊕	X.X	±0.30
								X.XX	±0.20
								X.XXX	±0.10